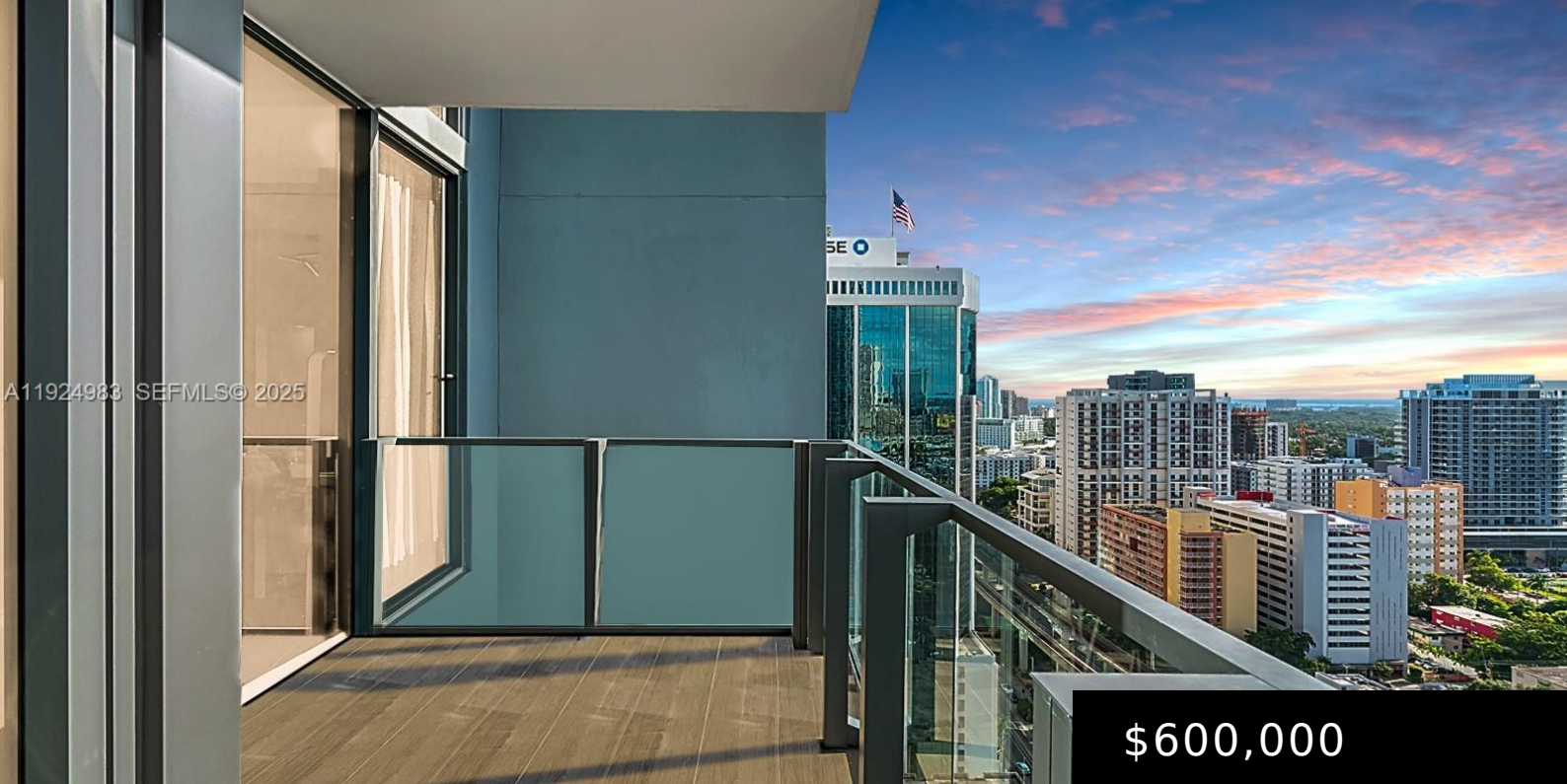


A11924983 SEFMLS© 2025



**\$600,000**

## 88 SW 7TH ST 2008

<https://brickellcitycenterfl.com>

RISE CONDO UNIT 2008 UNDIV 0.099329% INT IN COMMON ELEMENT OFF REC 29908-0132 Rise at Brickell City Centre: live in the center of the action! Unit 2008 is a 1-bed / 1.5 bath condo with 883 SF of living space plus a large balcony, offering stunning west views of Brickell and sunsets. Top-of-the-line white lacquer [...]

- 1 bed
- 2 baths
- Condominium
- Residential
- Active
- 883 sq ft

---

## Basics

**Category:** Residential

**Status:** Active

**Bathrooms:** 2 baths

**Floors:** 43 floors

**Year built:** 2016

**Subdivision Name:** RISE CONDO

**Type:** Condominium

**Bedrooms:** 1 bed

**Half baths:** 1 half bath

**Area:** 883 sq ft

**View:** City, Intercoastal

**County:** Miami-Dade



---

## Building Details

**Architectural Style:** HighRise

**Covered Spaces:** 1

**Floor covering:** Marble

**Construction Materials:** Block

**Garage Spaces:** 1

---

## Amenities & Features

**Pool Features:** Association,Heated

**Security Features:**  
ClosedCircuitCameras,DoorMan,LobbySecured

**Utilities:** CableAvailable

**Cooling:** CentralAir

**Heating:** Central

**Appliances:**

Dryer,ElectricRange,Microwave,Refrigerator,Washer

**Parking Features:** OneSpace

**Association Amenities:**

BikeStorage,BusinessCenter,Cabana,Clubhouse,FitnessCenter,Barbecue,PicnicArea,Playground,Pool,SpaHotTub

**Window Features:** ImpactGlass

**Exterior Features:** SecurityHighImpactDoors

**Interior Features:**

BreakfastBar,BedroomOnMainLevel,ClosetCabinetry,EatInKitchen,FirstFloorEntry,WalkInClosets

---

## Expenses, Fees & Taxes

**Association Fee:** \$1,447

**Tax Year:** 2025

**Tax Annual Amount:** \$10,241

---

## Miscellaneous

**Association Fee Frequency:** Monthly **List Office Name:** Compass Florida, LLC

**Listing Terms:** Cash,Conventional

